

The logo consists of the letters 'MM' in white, bold, sans-serif font, centered within a blue square.

MMM Group



# Selectomat SL

Leading quality – excellent pricing



- durable reliability
- best resources control
- global fast service

MMM.  
Protecting  
human  
health.

# Selectomat SL

Leading quality – excellent pricing



MMM is a leading supplier of hospital sterile processing equipment worldwide. For good reasons: Our machines stand out not only for their excellent quality and longevity. For more than five decades, MMM has proved to be a reliable partner to their clients – no matter where you are or when you need our help. That is why we exactly know what you need for your daily sterilization tasks.

Based on our longstanding experience, we have developed an innovative standard line of steam sterilizers, Selectomat SL, which meets the regular requirements of a hospital. The Selectomat SL sterilizer will convince you both with its well-known high MMM quality and low costs in investment, operation and service.

## Quality with a certificate



Reliable, gentle and economic: that is how steam sterilizers of Selectomat SL series process all kinds of hospital goods: solid and porous goods, heat sensitive plastics and textiles as well as liquids in open or loosely closed bottles. It goes without saying that the Selectomat SL meets all European standards and forward-looking quality requirements such as EN 285, EN 554, EN ISO 11134 etc.

## Easy recording

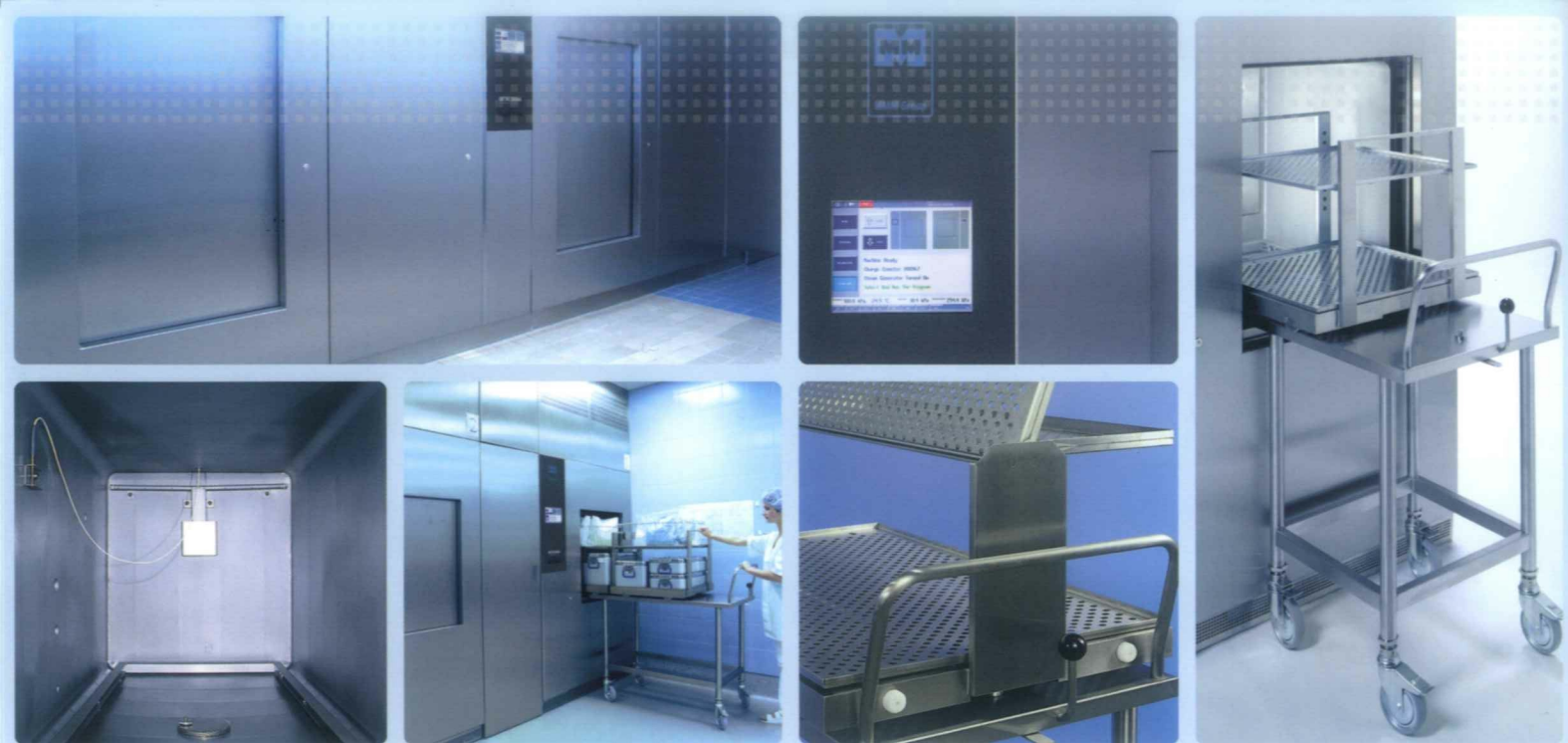
Steam sterilizers of the Selectomat SL series are available in a great variety of chamber sizes ranging from 160 to 1.280 litres and with a multitude of useful features. All important parameters of the sterilization process are measured redundantly and separately from the machine control system and recorded accordingly. The integrated batch printer then produces the detailed batch protocol, which serves both for the control of the sterilization safety and as proof in terms of European quality standards.

## Resource management

Optimized program cycles and the use of components with low consumption guarantee a high operating efficiency. By means of the integrated water saving system and the specific pre-heating device of the chamber, we have managed to realize an innovative resource management in the Selectomat SL. It allows you to reduce the consumption of power and water by up to 80 % compared to similar machines.

## Service – time is money

If necessary, our service teams all over the world are available within no time. In addition, the integrated self diagnostics and service program help to reduce considerably the maintenance and service costs. The result: downtimes for service reasons and subsequent service costs are cut to a minimum.



## Designed for reliability

Selectomat SL has been designed to meet the highest demand in terms of economy, functionality and user-friendliness. The sterilization chamber is made of high quality stainless steel (AISI 316 Ti and AISI 316 L) and is a warranty for the sterilizer's longevity and robustness in a hard day-to-day business. It's efficient insulation helps to reduce the loss of heat to a minimum and to save operating costs at the same time.

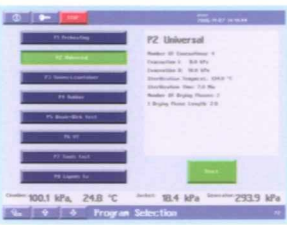
## Independent steam supply

The integrated electric steam generator of Selectomat SL sterilizer makes steam sterilization independent from the steam supply on site. It's high performance and the thermal degasification device make for excellent steam quality and short cycle times. The result: fast sterile throughput and ideal operating cost efficiency.

## Clear menu guidance

The ergonomically integrated 8.2" touch screen makes operation extremely easy. The program menus are clearly laid out and mostly self-explanatory. All relevant parameters such as temperature, pressure and remaining cycle time are displayed during the on-going cycle run.

## Extensive program variety



Apart from standard programs for the sterilization of solid and porous goods at 134°C or 121°C, Selectomat SL offers special programs for the treatment of prions and for disinfection at 105°C. A further 7 programs can be adjusted individually to your specific requirements.

## Great loading options

Special trays, containers, insert racks and loading trolleys tailored to fit the various models of Selectomat SL allow optimized utilization of the chamber volume and facilitate chamber loading and unloading with different goods.



MMM Group

## Dimensions

Type	Capacity		Inner chamber dimensions H x W x D in mm	Chamber volume (liter)	Outer machine dimensions H x W x D in mm	
	1 door	2 doors				
636 V	●	●	2	670 x 350 x 700	160	1918 x 1000 x 970 **
666 V	●	●	4	700 x 650 x 690	314	1918 x 1300 x 970 **
669 V	●	●	6	700 x 650 x 990	450	1918 x 1300 x 1270 **
6612 V	●	●	8	700 x 650 x 1340	610	1918 x 1300 x 1620 **
6618 V		●	12	700 x 650 x 1940	885	1918 x 1300 x 2240
9612 H	●	●	12	1000 x 650 x 1340	900	1918 x 1900 x 1620 **
9618 H	●	●	18	1000 x 650 x 1940	1275	1918 x 1900 x 2220 **

\* including 100 mm supporting legs \*\* plus 20 mm in case of two doors

## Consumption

Type	Cold water <sup>2)</sup> m <sup>3</sup> / cycle	Electric energy <sup>3)</sup> kWh / cycle	Compressed air Nm <sup>3</sup> /h	Power input (kW) / fuse protection (A)	Demin. water <sup>4)</sup> m <sup>3</sup> / cycle
636 V	0.06	5.0	0.2	24,5/63	0,006
666 V	0.07	6.0	0.2	38/63	0,008
669 V	0.08	7.5	0.2	47/80	0,009
6612 V	0.09	9.0	0.2	48/80	0,011
6618 V	0.20	15.0	0.2	66/100	0,015
9612 H	0.20	16.0	0.2	66/100	0,013
9618 H	0.30	23.0	0.2	75/125	0,025

H: Horizontal sliding door with electric door drive, V: Vertical sliding door with electric door drive

<sup>1)</sup> 1 STU: 300 x 300 x 600 mm, <sup>2)</sup> Cold water: temperature: max. 15 °C pressure: 3 - 5 bar

<sup>3)</sup> Electricity: 3P/PE/AC 400, <sup>4)</sup> Demineralized water: Conductivity: max 15microS/cm

## Selectomat SL – technical description

### Standard equipment

- Integrated electric steam generator with automatic scouring device
- Water saving vacuum pump
- Special chamber jacket for improved chamber preheating and reduction of demineralized water consumption
- Ceramic bead blasted inner chamber walls
- Chip card reader
- Touch screen 8.2"
- Display of remaining cycle time
- Sterilization chamber, doors and heated chamber jacket are made of high quality CrNiMo steel (AISI 316 TI / AISI 316 L)
- Low-noise thermo-printer for batch documentation
- RS 232 interface

### Options:

- Condensate cooling device
- Stainless steel valves
- Additional pressure gauge on loading and unloading side
- Warm-up function
- Tropical execution
- Special voltage
- Chamber inserts
- Chamber inserts for trolley docking
- Chip card
- Accessories such as trays, baskets etc.
- Transport and loading trolleys

### Sterilization programs

#### Standard:

##### **Preheating 134° C**

Short-time preheating program

##### **Universal 134° C**

Wrapped devices, sterilization time: 7 min

##### **Universal Container 134° C**

Wrapped devices with super drying, sterilization time: 7 min

##### **Rubber 121° C**

Wrapped devices made of glass, rubber or plastics, sterilization time: 20 min

##### **Tools fast**

Unwrapped devices, sterilization time: 4 min

#### Optional:

##### **Prions 134°C**

Sterilization time: 60 min

##### **Disinfection 105°C**

Disinfecting time: 20 min

##### **Solutions 121°C**

Liquids in open bottles, sterilization time: 20 min

#### Test programs

##### **BD test 134° C**

Steam penetration test, holding time: 3.5 min

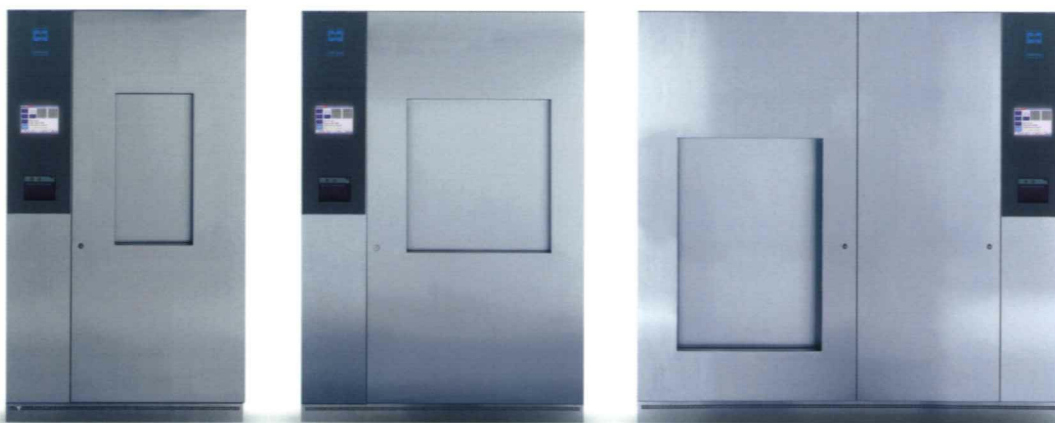
##### **Vacuum test**

Air leakage test, checking the tightness of the entire system

##### **Service**

Service program for easy control and maintenance

Further programs can be set to customer requirements. Customized programs can be stored on chip cards and entered by means of the chip card reader integrated in the operating panel. For the sterilization of medical devices, the selected process must be validated.





## MMM Group

As one of the world's leading suppliers of sterile processing systems, MMM has been working actively to promote good health since 1954. With a full range of sterilization and disinfection products and services – that can be found in every branch of health-care from hospitals and scientific institutes, to laboratories and the pharmaceutical industry – MMM, has over the years, consolidated its position as a pioneer of quality and innovation both in the German and international market. In our two production facilities based in Stadlern, Germany, and Brno, in the Czech Republic,

we manufacture products that meet the highest demands of our customers world wide. The depth and precision of production standards at both plants ensure that we accomplish the rigorous quality requirements of medical engineering.

900 competent employees work together as a committed and enthusiastic team, dedicated to achieving the mission of the MMM Group.

**Protecting human health.**

MMM Münchener  
Medizin Mechanik GmbH  
Simmelweisstraße 6  
82152 Planegg / Munich  
Tel.: +49 89 89918-0  
Fax: +49 89 89918-118  
[www.mmmgroup.com](http://www.mmmgroup.com)

Presented by: